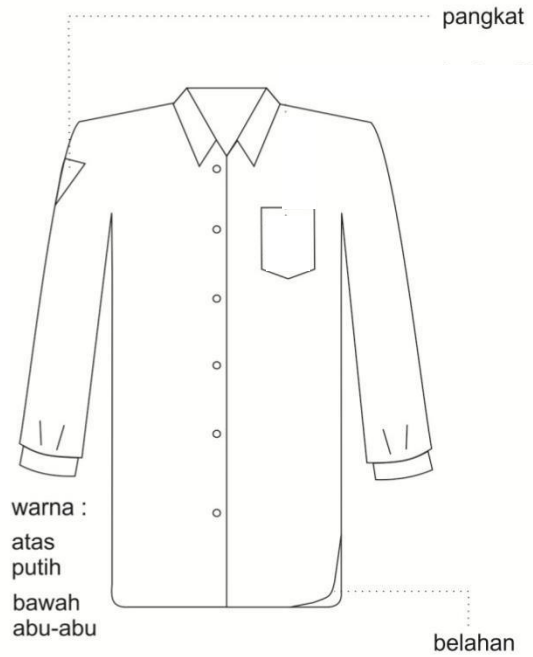


SERAGAM PUTRI SMA MTA SKA

senin - selasa



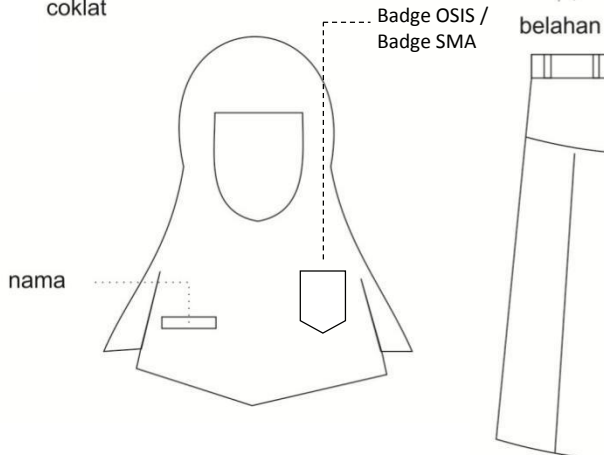
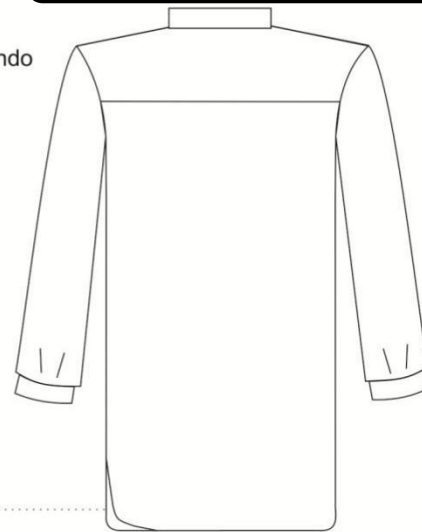
rabu



Kamis : Seragam Batik

Jumat : Seragam Angkatan

sabtu



"panjang baju minimal sampai lutut"

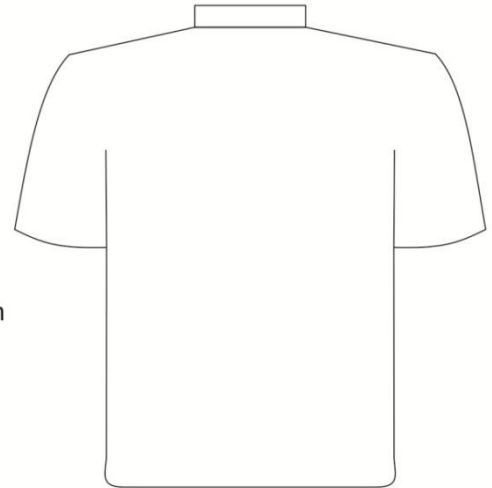
Panjang kerudung dari pundak ke bawah minimal 20 cm
Khusus kerudung wajib beli di sekolah.

SERAGAM PUTRA SMA MTA SKA

senin - selasa

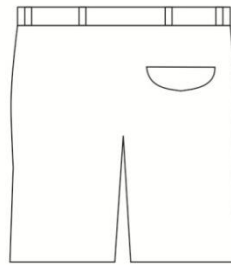
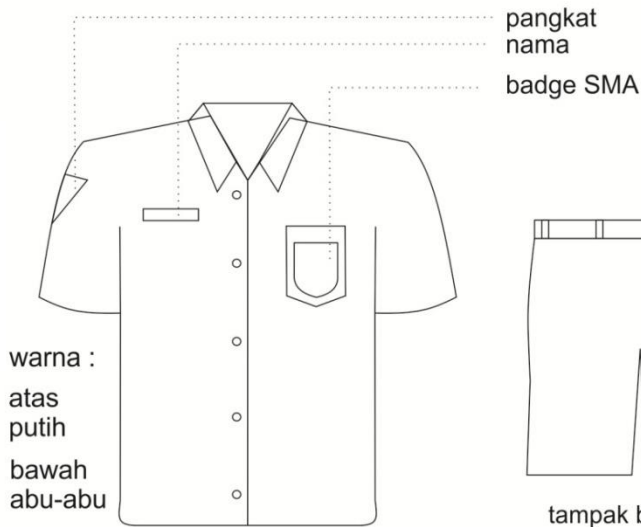


panjang baju putra 20 cm
dibawah garis pinggang



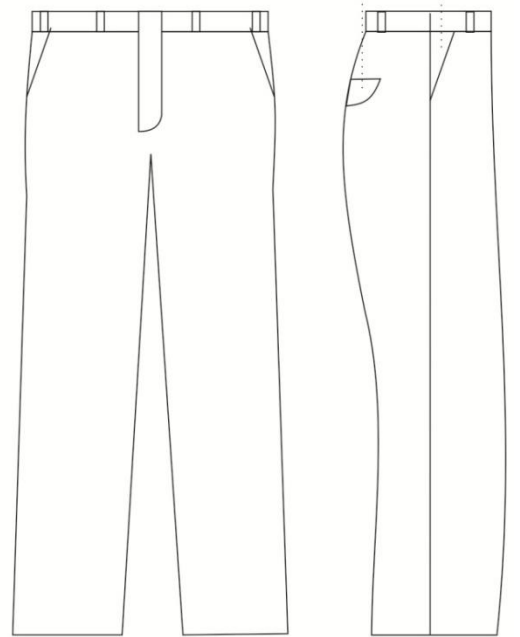
tampak belakang
(semua baju sama)

rabu



tampak belakang

kantong
belakang kantong



tampak depan

tampak samping

sabtu



Kamis : Seragam Batik

Jumat : Seragam Angkatan

lebar bawah
minimal 22 cm